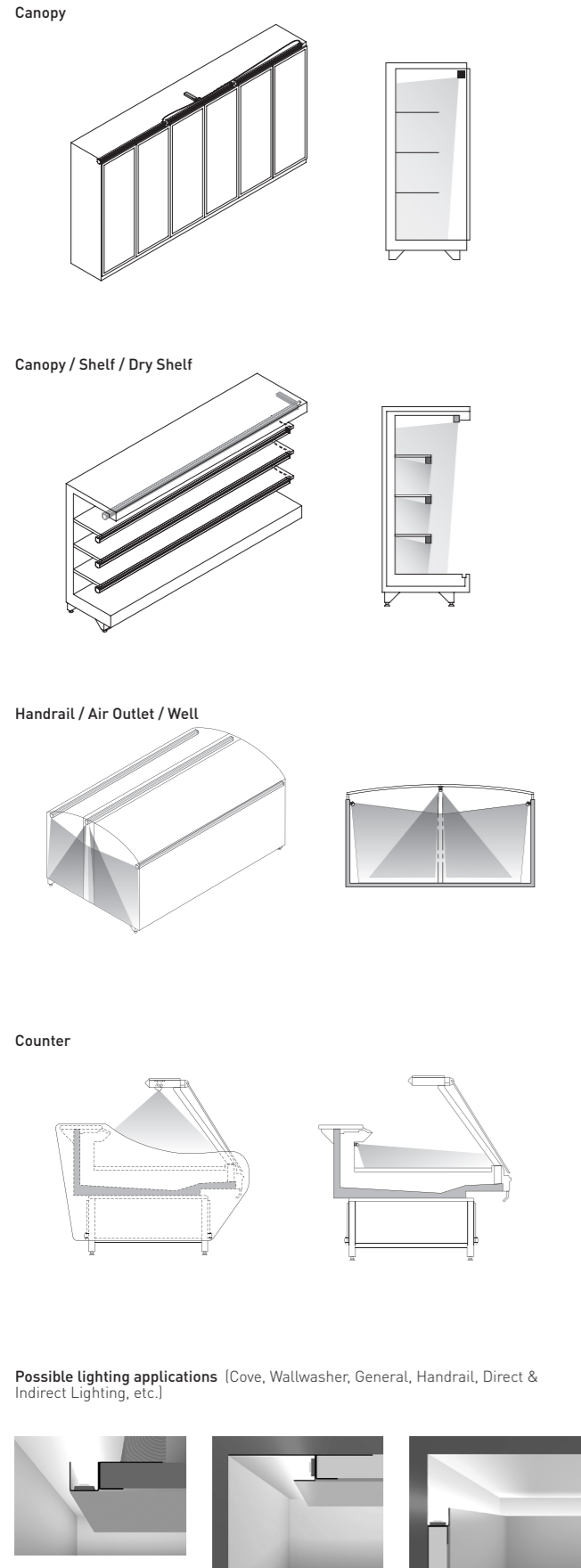
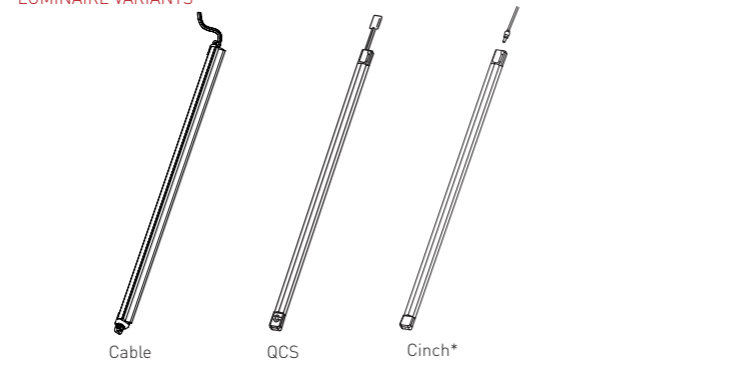


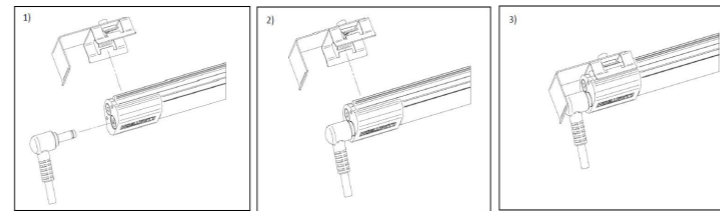
APPLICATIONS



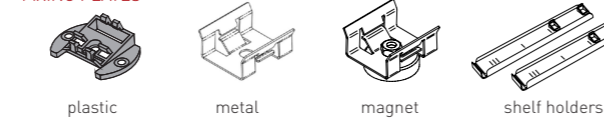
LUMINAIRE VARIANTS



*When using the Cinch luminaires it is recommended to use a strain relief to comply with EN 60335

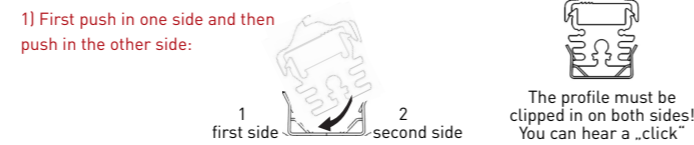


FIXING PLATES



Min. 2 clips and one additional clip every 500mm.
Plastic clips only for non-refrigerated applications.

Correct attachment of the luminaire in the clip:

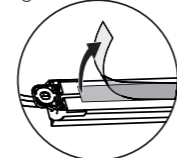
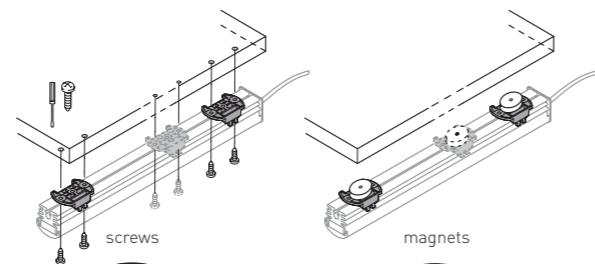


2) Do a pull test - can you move the luminaire?
If yes, press the clip closer on both sides (before mounting the luminaire)
If no, it's perfect!

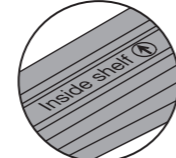
Angles* 0° 15° 30° 45° 60° adjustable

* Exemplary presentation. LUMITECH offers a wide range of different fixing plates and optics.

Variants

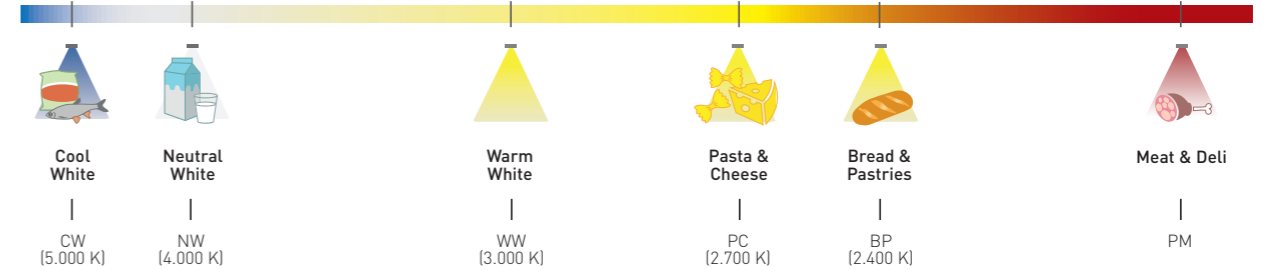


Optional: tape
The mounting surface should be cleaned with suitable detergents, e.g. an isopropanol/water mixture [50:50]

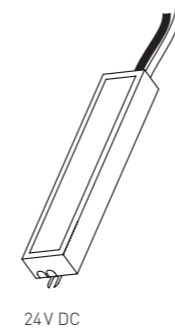


Attention!
If provided, please note the mounting direction written on the label

LUMITECH FOOD COLOURS



CONVERTER



For use with following power units (24V DC SELV):
For UL compatibility "Use only with Class 2 power unit"

CONVERTER	35W 24V	IP20
CONVERTER	60W 24V	IP20
CONVERTER	100W 24V	IP20
CONVERTER	200W 24V	IP20
CONVERTER PWM	120W 24V	IP67 Dimmer*
CONVERTER one4all	150W 24V	IP20 Dimmer (SwitchDim & DALI)

Additional drivers for Architectural Line IP54:

LTP-1046-V01	CONVERTER 120W 24V IP67
LTP-1098-V01	CONVERTER SwitchDim 35W 24V IP20
LTP-1097-V01	CONVERTER SwitchDim 60W 24V IP20
LTP-1096-V01	CONVERTER SwitchDim 100W 24V IP20
LTP-1084-V01	CONVERTER PWM 40W 24V IP67

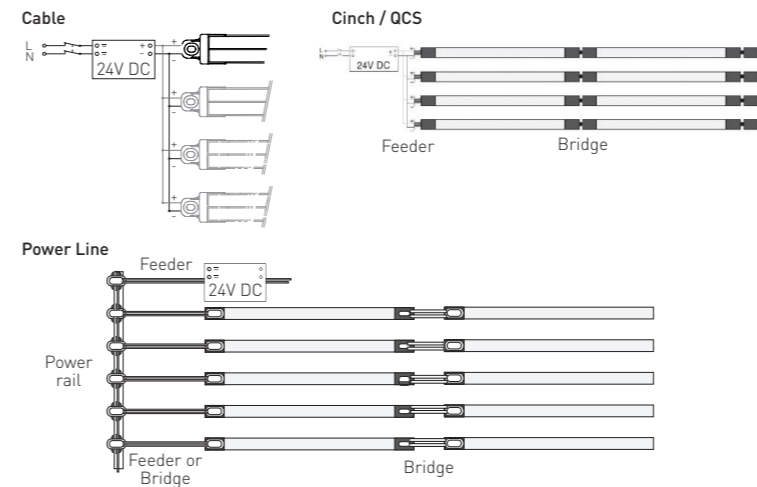
24V DC

Attention:
The converters & dimmers may be loaded up to max. 90%!
Use only converters with short-circuit, over current and over temperature protection

ELEVATION PLAN

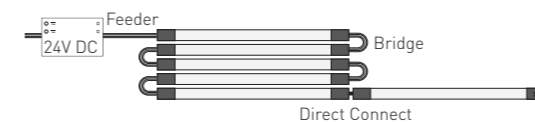
Chaining length:

*Note exact chaining length information in datasheet!



Attention!
- the power line is only suitable for vertical mounting
- max. 15 Newton
- max. 108W / 4,5A
- the user is responsible for ensuring max. electrical, mechanical & thermal properties
- do not bridge conductors
- only compatible with protection class III

Cinch

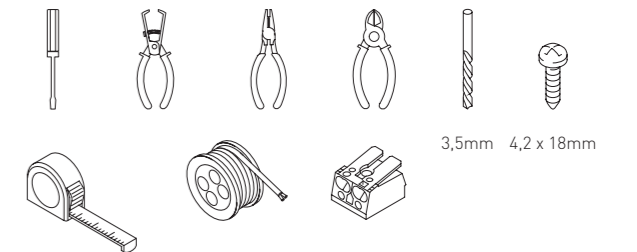


*Dimmer



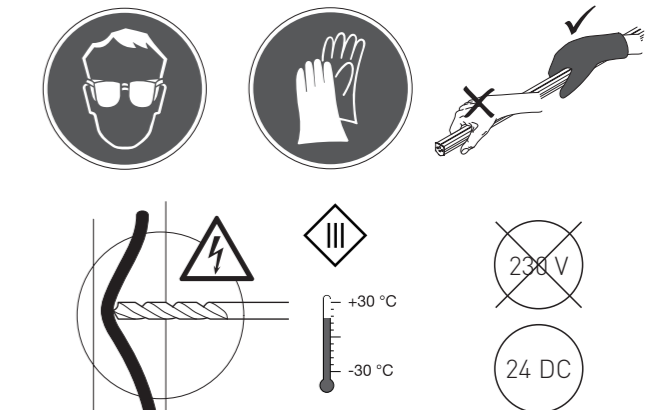
When using the dimmer (PWM), there is an additional connection for the HMI device [1-10V]

TOOLS



Recommended cable lengths and diameters:
0,75mm² for cable lengths 0m - 4m
1,5mm² for cable lengths 4m - 8m
2,5mm² for cable lengths 8m - 12m

ATTENTION



Attention!
By physically opening the luminaire, or when using accessories from other manufacturers, any warranty claim becomes invalid!

CAUTION: To reduce the risk of fire, do not install in a compartment smaller than 4 cm by 4 cm by length of product.

IP PROTECTION

IP20 for QCS
IP54 for cable & Cinch*



*Upgrade from IP20 to IP54 with the protection kit (for Cinch)

GENERAL INFORMATION

Feeder = Connection converter to luminaire / connection luminaire to power rail
Bridge = Connection luminaire to luminaire / connection luminaire to power rail
Direct Connector = rigid connection from luminaire to luminaire
The direct connector may only be installed if it is not exposed to vibrations!

Application note:
The loose cable ends can be "hung" on the old cables with insulating tape and thus pulled to the converter and reconnected.

All sketches and drawings are to be understood as symbols resp. examples.
Text/Descriptions can apply only to specific products.